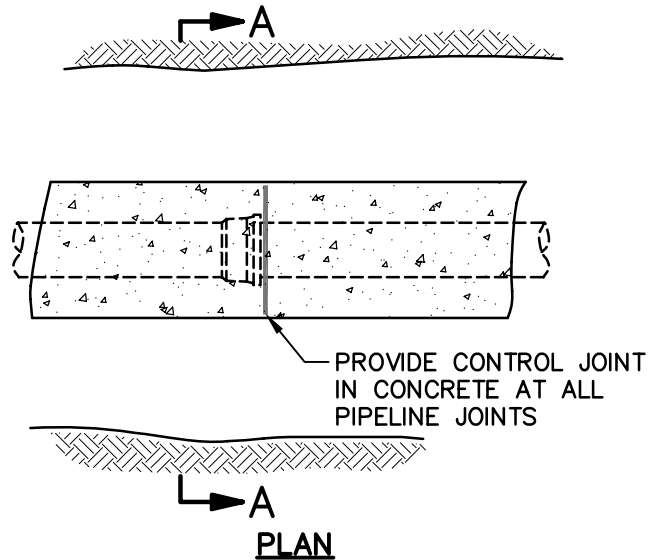
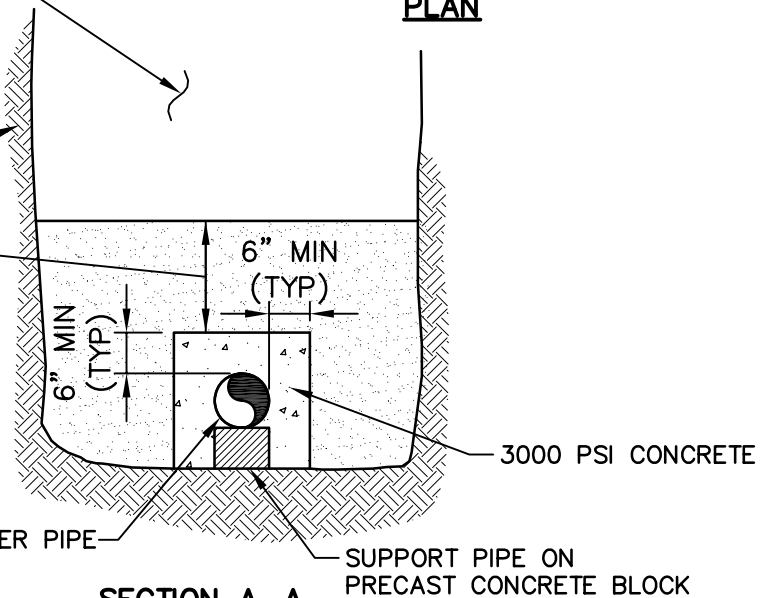


REFER TO TOWN OF CANTON
SANITARY SEWER STANDARD
DETAILS (NO. 014 AND 015)
FOR SEWER TRENCHES FOR
REMAINING BACKFILL
REQUIREMENTS



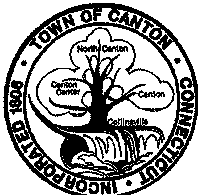
UNDISTURBED
MATERIAL

12" MIN
SCREENED SAND



STANDARD NOTES:

1. TO BE USED FOR ALL GRAVITY SEWER PIPES LESS THAN 5' DEEP TO CROWN OF PIPE IN THOSE CASES WHEN THE WPCA OR ITS TECHNICAL CONSULTANT APPROVES SUCH INSTALLATION. EVERY EFFORT SHALL BE MADE TO MAINTAIN AT LEAST 5' OF COVER. UNDER NO CIRCUMSTANCES SHALL THE GRAVITY SEWER BE INSTALLED WITH LESS THAN 4' OF COVER.
2. MAINTAIN 10 FEET (HORIZONTAL AND 18 INCHES (VERTICAL) SEPARATION BETWEEN PROPOSED SEWERS AND EXISTING WATERMAINS.
3. WHEN HORIZONTAL SEPARATION CANNOT BE MAINTAINED, ENCASE THE SANITARY SEWER PIPE IN CONCRETE AT WATER MAIN CROSSINGS WHEN LESS THAN 18" OF VERTICAL SEPARATION IS PROVIDED FROM THE CROWN OF THE SEWER PIPE TO THE INVERT OF THE WATER MAIN.
4. THE SANITARY SEWER PIPE SHALL BE ENCASED IN CONCRETE ADJACENT TO WATER MAIN SYSTEMS IN AREAS THAT HAVE LESS THAN 10' OF HORIZONTAL DISTANCE AND THE SEWER INVERT IS ABOVE THE WATER LINE INVERT.
5. WIRE SUPPORTS TO BE PLACED AROUND THE PIPE AND ANCHORED TO THE PRECAST CONCRETE BLOCKS TO PREVENT FLOATATION OF THE PIPE WHILE THE CONCRETE CURES.
6. REFER TO SECTION 03310 FOR ADDITIONAL CONCRETE REQUIREMENTS.



Water Pollution Control Authority
Town of Canton

4 Market Street
P.O. Box 168
Collinsville, Connecticut 06022

SEWER CONSTRUCTION DETAIL

CONCRETE ENCASEMENT
FOR GRAVITY SEWER

NO SCALE

LATEST REVISION: 2/07

NO. 016