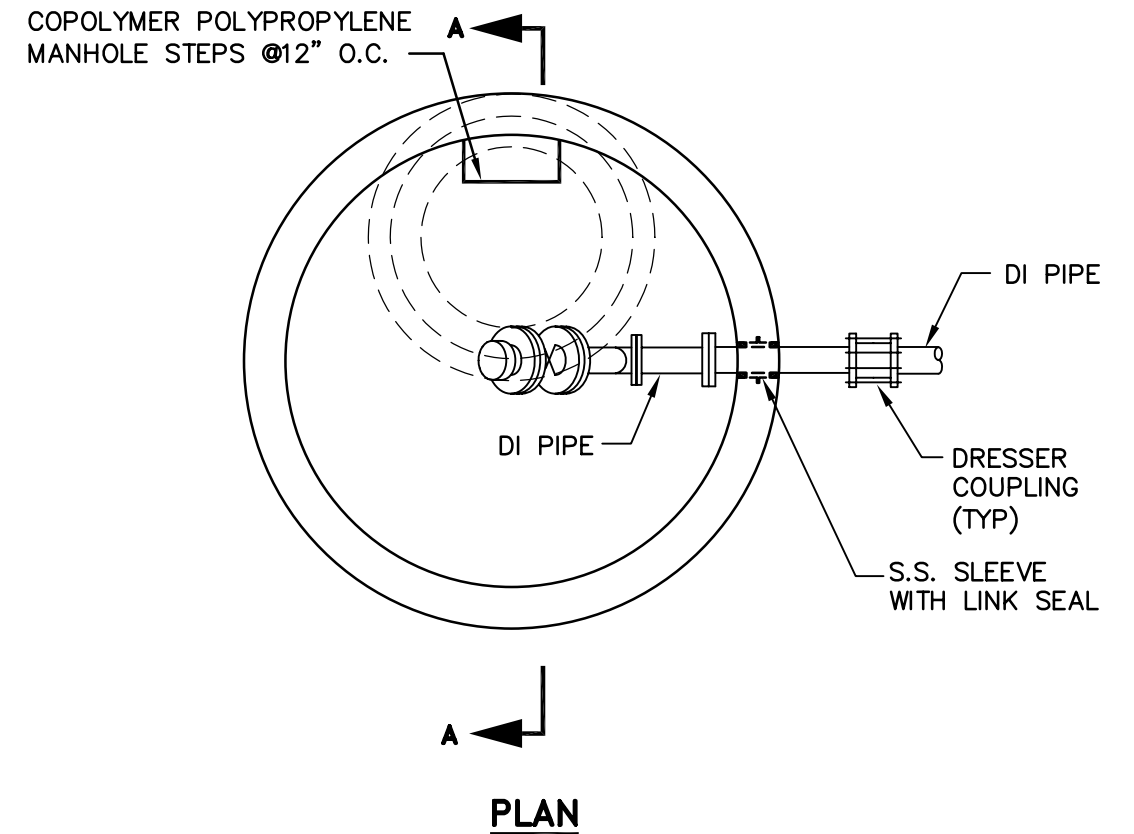
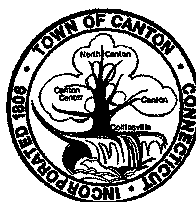


SECTION A-A



STANDARD NOTES:

1. SIZE OF INTERNAL DUCTILE IRON PIPING TO MATCH DIAMETER OF FORCE MAIN PIPE SIZE (4" MIN).
2. REFER TO SECTION 02530 FOR ADDITIONAL REQUIREMENTS ASSOCIATED WITH FORCE MAIN SEWER PRECAST STRUCTURES.
3. USE A MINIMUM OF 6'-0" DIAMETER STRUCTURE FOR FORCE MAINS WITH PIPE SIZES GREATER THAN 4" DIAMETER.

 <p>Water Pollution Control Authority Town of Canton</p> <p>4 Market Street P.O. Box 168 Collinsville, Connecticut 06022</p>	SEWER CONSTRUCTION DETAIL	
	<p>FORCE MAIN OFFSET CLEANOUT STRUCTURE</p> <p>NO SCALE</p>	
LATEST REVISION: 2/07	NO. 039	